

PHOTO TRIBUTE

produced by our design team for your family

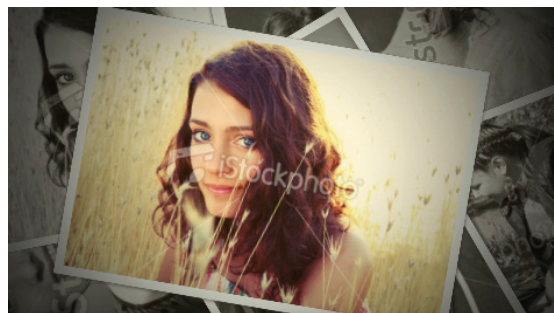
A perfect way to remember your loved one & showcase their life in pictures

A photo tribute is a special way of showcasing the life of your loved one. Our Wallsend Chapel has high definition LCD displays in the chapel and foyer, while our Belmont Chapel has large projection screens in the chapel and high definition LCD screens in the foyer.

We digitise, colour correct and restore your family photos to create a fitting tribute. The photo tribute is saved to a leather bound USB and is a beautiful keepsake. The cost of the production is dependent upon the number of photos to be used:

A base package of up to 50 photographs is \$260
Additional photos will be charged at \$3 each
A maximum of 80 photos will be accepted

Pettigrew family funerals can also make your photo tribute available in high definition over the internet so you can share it with family and friends anywhere around the world.



Our professional design team are able to create the photo tribute, or families may choose to create their own. If that is the case please contact the arranger to discuss format requirements or see "DIY Photo Tribute" PDF download on our website.